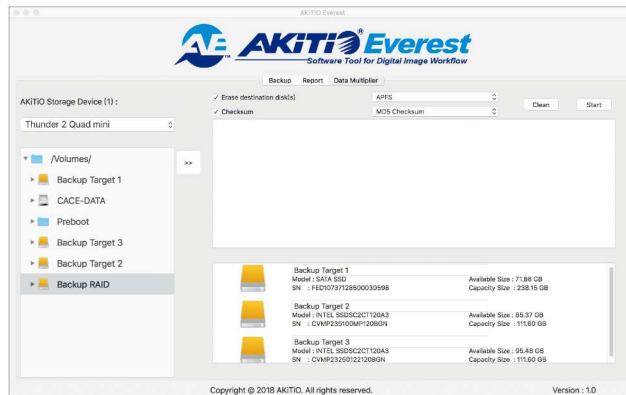
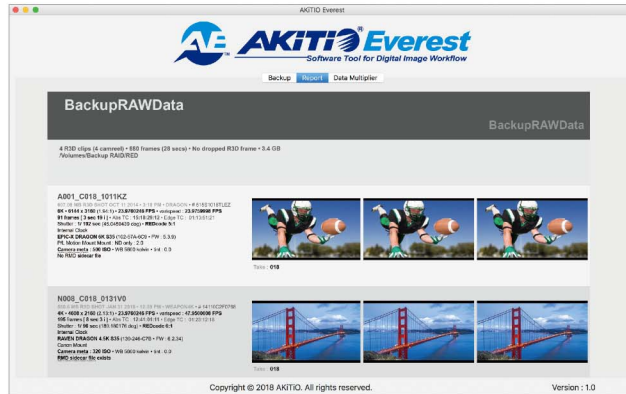
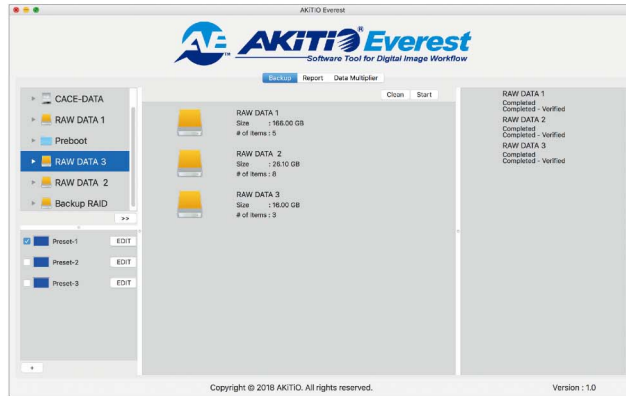


IT ALL STARTS with AKiTiO
Software Tool for Digital Image Workflow



IT ALL STARTS with AKiTiO





AKiTiO Everest

• Backup and Verification:

read the content from RED MINI-MAG® SSD and backup to a RAID or other storage device.

• Imagine processing:

capture some snapshots from RED's raw data (R3D) and generate reports. This will help other collaborators in the workflow to easily find the exact clips.

• Duplicate and Distribute:

generate 3 copies of the contents and the above reports, so that they can be distributed to collaborators in the workflow.



AKiTiO RED Tray

Patent-pending design to adapt the RED MINI-MAG® SSD to AkTiO's storage device.



Thunder3 Quad X

Insert the AkTiO RED Tray in the first bay of Thunder3 Quad X, and use the AkTiO Everest Software to duplicate three copies.



Thunder3 OTTO

Insert the AkTiO RED Tray in the first bay of Thunder3 OTTO, the AkTiO Everest Software can backup the contents to a RAID-ed storage, and create three copies for distribution.